

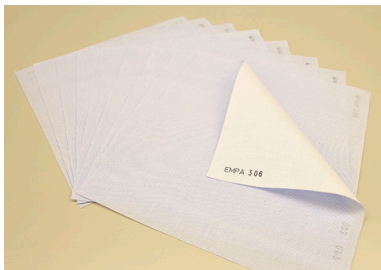
“POKA DOT” FABRIC⁺

For the Assessment of “Mechanical Action” in Washing and Tumble Dry Processes

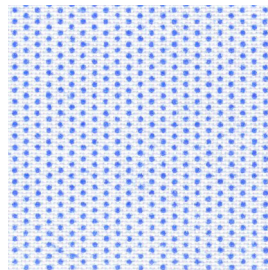
This fabric allows to measure the “Mechanical Action” in washing processes by measuring the loss of dots (applied on a fabric) during the process. It is usable for all single wash processes in household washing machines (20°C to 60°C) and also for multiple washes on the low end of mechanical action (as in wool-, hand and easy care washing program). It also can be used for single or multiple household tumble dry processes.

article 306

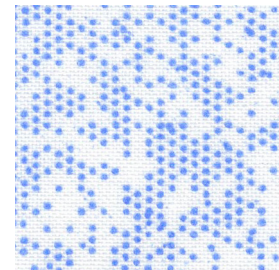
100% cotton with polyamide dots



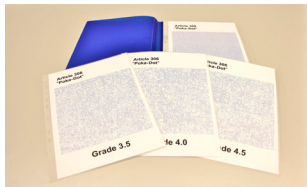
before washing



after washing



Possibilities to analyse:



Rating with Grades



Colormatching System



Digital Imaging System (DIS)

Wascator CLS, different load sizes, Evaluation with DIS, density of Dots

